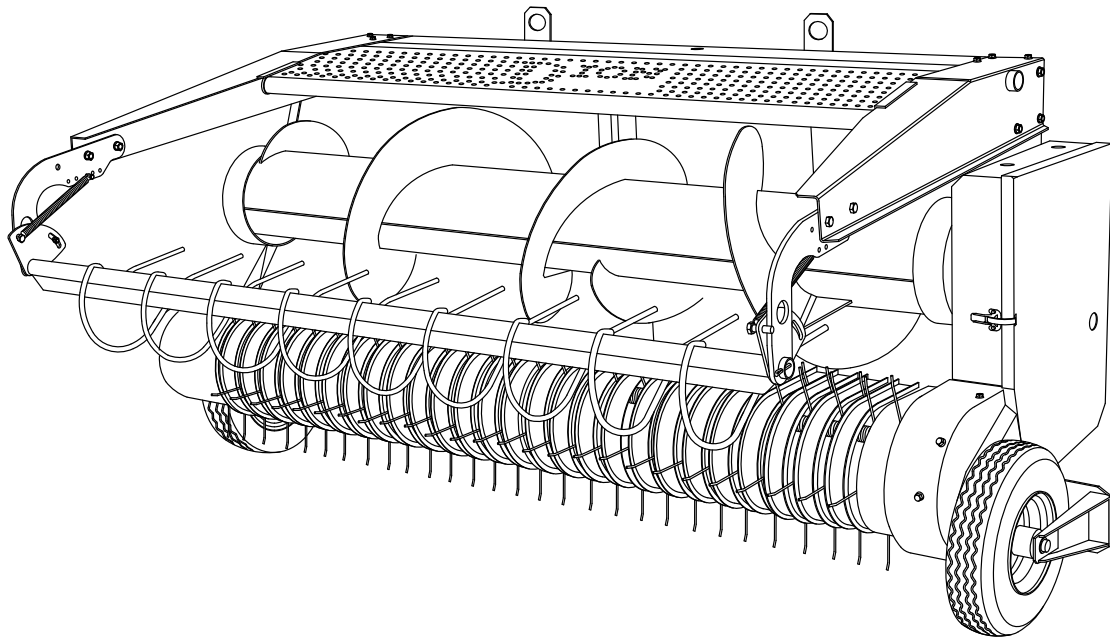




F46



**Operator's Manual
Hay Pick-Up Attachment**



DION-AG INC. LIMITED WARRANTY TERMS AND CONDITIONS

Covered by Warranty – Under the warranty, Dion-Ag guarantees its new machinery and/or equipment to be free of defects, both in workmanship and material, for a period of one (1) year from the time of delivery by the dealer. Dion-Ag Inc. will repair or replace, at its discretion and without charge for service parts or labour, any defective part of the equipment on condition that the machinery and/or equipment has been operated in accordance with the instructions contained in the Dion-Ag Inc. Operator's Manual.

Not covered by Warranty – This warranty does not cover: (1) service parts and labour needed to maintain the unit; and (2) the replacement of parts due to normal wear and tear. The owner is responsible for these items. Some examples of maintenance and normal wear parts are: oil, lubricants & other fluids, belts, knives, clutch and clutch discs, roller chain, paddles, etc. Dion-Ag Inc. is not responsible for depreciation or damage caused by normal wear, lack of reasonable and proper maintenance, failure to follow operating instructions, misuse, lack of proper protection during storage, vandalism, the elements, collision or accident.

Securing Warranty Service – To secure warranty service, the purchaser must report the machinery and/or equipment defect to an authorized dealer and request warranty service within the applicable warranty terms.

Owner's Obligation – It is the responsibility of the Owner to transport the equipment to the service shop of an authorized Dion-Ag Dealer or to reimburse the dealer for any travel or transportation expense involved in fulfilling this warranty. This warranty does NOT cover rental of replacement equipment during the repair period, loss of profits, or other commercial loss, and any or all incidental or consequential damages, overtime labour charges and/or freight charges for replacement parts.

Limitations of This Warranty – No agent, employee or representative of Dion-Ag Inc. has the authority to amend, or modify, in any manner whatsoever, the terms of the present warranty. The express warranties herein contained exclude all other express, implied or statutory warranties. THIS WARRANTY IS IN LIEU OF ALL OTHER WARRANTIES INCLUDING THE WARRANTIES OF MERCHANTABILITY AND/OR FITNESS FOR ANY PARTICULAR PURPOSE.

Right to Inspect – Dion-Ag and its authorized agents reserve the right to inspect the purchaser's Dion-Ag product to determine if a defect in material or workmanship exists prior the commencement of any covered repairs. It is the purchaser's responsibility to ensure availability and/or delivery of the product to Dion-Ag for the purpose of inspection.

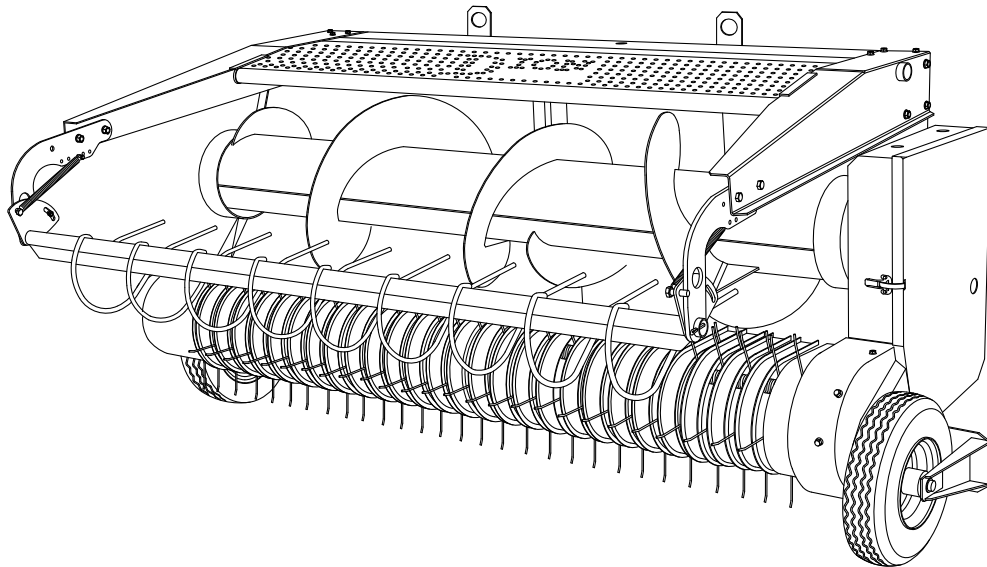
Right to Make Design Changes – Dion-ag reserves the right to make changes in the design and other changes in its products at any time and from time to time without notice and without incurring any obligation of its part to modify, improve or add to products previously ordered from Dion-Ag and sold or shipped by Dion-Ag.

Liability – Dion-Ag Inc. shall not be liable, if, during the use of the machinery and/or attachment, the security guards have been removed, modified, or have not been properly maintained.

The Warranty shall not apply if the instructions mentioned in this manual have not been followed completely and correctly. Nor will the warranty apply if the owner or any third party modifies the machine without Dion-AG's knowledge and/or authorization. Every purchaser, when buying a Dion-Ag machine, agrees and undertakes to use and operate the machinery and its component parts safely, and in accordance with all applicable laws, and in accordance with the Operator's Manual. Furthermore, the purchaser agrees and accepts to indemnify and hold harmless Dion-Ag for all losses and damages to any person or property resulting from the purchaser's non-compliance with the terms and conditions of this warranty. Each purchaser further agrees to bring the warranty to the attention of any subsequent purchaser, and to obtain agreement therein as a condition of resale or transfer.



HAY PICK-UP ATTACHMENT



TO OUR CUSTOMER

We appreciate your confidence in DION Farm Equipment and thank you for your trust. In preparing this manual, we hope we have furnished you with a valuable tool for operating and maintaining this fine machine. Use this manual as your guide. Practicing the instructions given here will result in many years of dependable service from your machine.

Your Dealer can give you assistance with parts and specially trained personnel to assist you in repair and maintenance.

Call your Dealer if you need any assistance or information.

TABLE OF CONTENTS

SPECIFICATIONS.....	5
SERIAL NUMBER LOCATION	6
CHECK LIST	7
FOREWORD	8
SAFETY RULES.....	9
SAFETY ALERT SYMBOL.....	9
FOLLOW A SAFETY PROGRAM	9
A WORD TO THE OPERATOR	9
SAFETY RULES SPECIFIC TO THIS MACHINE.....	10
PROCEDURES FOR STOPPING THE HAY PICK-UP ATTACHMENT	11
GUARDS AND SHIELDS	11
SAFETY SIGN LOCATION.....	12
ASSEMBLING	13
INSTALLING THE HAY SHIELD AND FRONT WINDGUARD	13
LUBRICATION.....	15
LUBRICATION CHART.....	15
TYPE DE LUBRICANTS.....	15
OPERATION.....	16
OPERATION TIPS.....	16
BOLT TORQUE SPECIFICATIONS.....	16
TRANSMISSION 1000 - 1000 AND 1000 - 800 RPM.....	16
ADJUSTMENTS - MAINTENANCE.....	17
AUGER SCREW DRIVING CHAIN TENSION ADJUSTMENT	17
PICK UP REEL DRIVING CHAIN TENSION ADJUSTMENT	18
INTERMEDIATE DRIVING CHAIN TENSION ADJUSTMENT	18
ATTACHMENT DRIVING CHAIN.....	18
TIRE WHEELS	18
SHOES	19
WINDGUARD	19
LIFT EYELET.....	20
STAR RATCHET CLUTCH	20
WEAR PLATE.....	20
FEED AUGER ROTATION SPEED ADJUSTMENT	20
JAW-SPUR CLUTCH SYSTEM.....	21
DISASSEMBLING / ASSEMBLING THE RADIAL PIN CLUTCH	22
STORAGE	24

SPECIFICATIONS

Specifications and design are subject to change without notice and without liability therefore.

MODEL : Hay Pick-up Attachment F46

WEIGHT AND DIMENSIONS:

Weight 840 lbs (380 kg)
Overall width 104" (264 cm)
Pick-up width 84" (214 cm)
Left & right auger action Auger diameter 20" (51 cm)
Number of drum bars 5
Number of pick-up fingers 26 (X5)
Pick-up fingers 130 at 3" (7.6 cm) center-to-center

DRIVE:

Drive type Roller chain
Overload protection Torque limiter

DESCRIPTION:

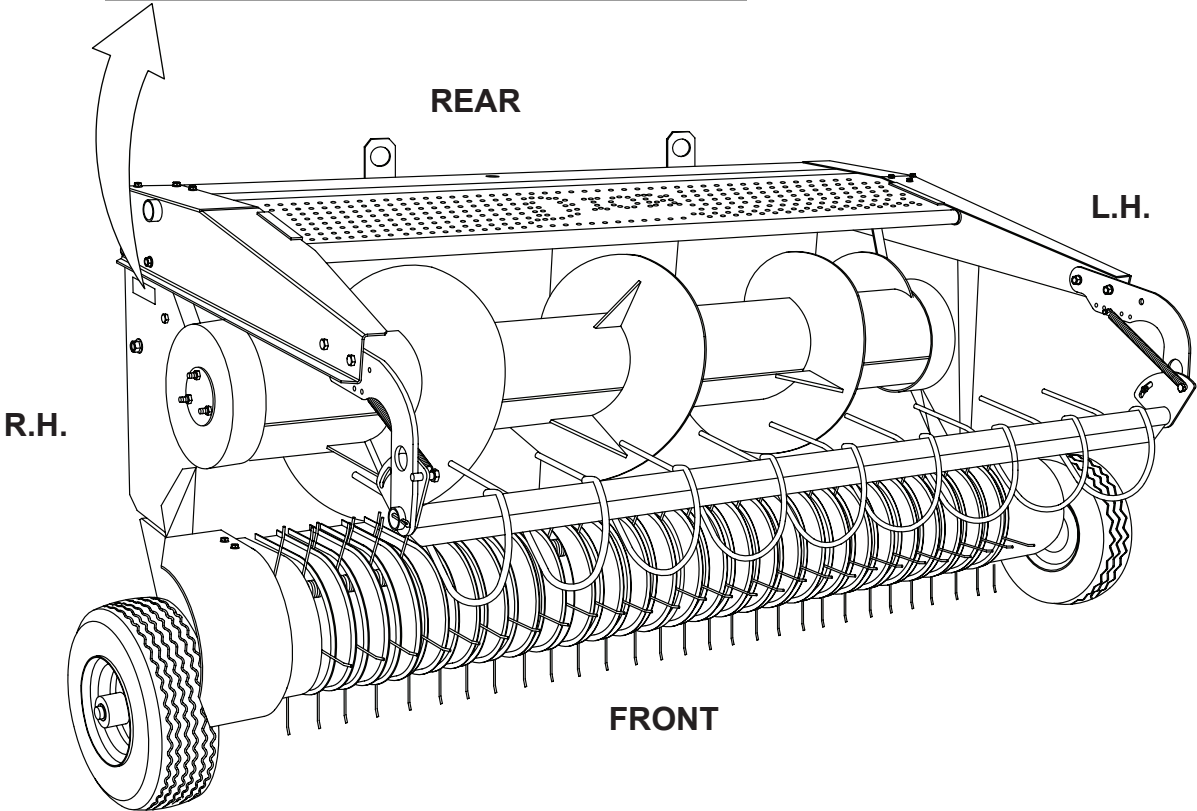
Adjustable wheel
Adjustable protection shoes
Adjustable windguard

SERIAL NUMBER LOCATION

For your convenience, write down in full in this manual both the model and serial numbers of your machine, as shown on the name plate illustrated below. Always mention both the model and the serial numbers when ordering parts or regarding any other correspondence referring to your machine

Write down your number here:

MODEL NO.	SERIAL NUMBER
<input type="text"/>	<input type="text"/>



CHECK LIST

PRE-SEASON CHECKS

- Clean the Hay Pick-up Attachment, removing trash and dirt accumulation
- Clean and inspect chains for excessive stiffness or wear
- Lubricate the machine according to the LUBRICATION chart. Make sure grease fittings are in place and taking grease properly
- Check to make sure the Pick-up Attachment is attached properly to the Forage Harvester. See that the Pick-up Attachment drive chain is installed and correctly aligned and tensioned
- Run the Pick-up Attachment at half-speed for about 10 minutes. Listen for abnormal noises. Shut off the tractor engine, and inspect all bearings for over-heating or excessive wear. Also check roller chains and sprockets for over-heating

DAILY CHECKS

- Lubricate the machine following instructions in the LUBRICATION section
- With tractor shut off, check chains for tension and alignment
- Check tractor hook-up for safety and proper connection
- Make sure all bolts and nuts are in place and tighten. Make sure all parts are well secured to the machine
- Check for missing pick-up teeth on the attachment
- Make sure all guards and shields are properly in place and in good condition

FOREWORD

TO OUR CUSTOMER

The following pages and illustrations are printed to help supply you with the knowledge to better operate and service your Hay Pick-up Attachment.

Any piece of equipment needs, and must have a certain amount of service and maintenance to keep it in top running condition. We have attempted to cover all the adjustments required to fit most conditions; however, there may be times when special care must be taken to fit a condition.

Study this operator's manual carefully and become acquainted with all the adjustments and operating procedures before attempting to operate your new equipment. Remember, it is a machine and it has been designed and tested to do an efficient job in most operating conditions and will perform in relation to the service it receives.

If special attention is required for some conditions, ask your Dion Dealer; his parts and Service Organization will be glad to help and answer any questions on operation and service of your new machine.

THIS MANUAL SHOULD REMAIN WITH THE MACHINE WHEN SOLD

This manual was prepared from the latest product information available at publication time. The Company reserves the right to make changes at any time without notice.

The safety section of your Operator's manual is intended to point out some of the basic safety situations which may be encountered during the normal operation and maintenance of your Hay Pick-up Attachment, and to suggest possible ways of dealing with these situations. This section is NOT a replacement for other safety practices featured in other sections of this book.

WARRANTY INFORMATION

The warranty for this machine is located at the beginning of this manual.

If the Hay Pick-up is used with a Forage Harvester from another manufacturer, the warranty is limited to the Hay Pick-up.

You, the equipment purchaser, shall assume charges for service calls or transportation of equipment to and from the location of servicing Dion dealer.

SAFETY

The safety of the operator is one of the main concerns in designing and developing a new Hay Pick-up Attachment. Designers built in as many safety features as possible. However, every year accidents occur which could have been avoided by taking a more careful approach to handling farm machinery and implements.

Read and implement the safety instructions detailed in the safety section of this manual.

SAFETY RULES

SAFETY ALERT SYMBOL



The symbol above calls your attention to instructions concerning your personal safety. It is found throughout the manual as well as on the machine to point out specific hazards and ways to avoid them. Always follow the instructions to minimize the risk of personal injury or death.

DANGER, WARNING AND CAUTION

Whenever you see the words and symbols shown below, used in this manual and on decals, you **MUST** take note of their instructions as they relate to personal safety.



DANGER: Indicates an *imminently hazardous situation that, if not avoided, will result in DEATH OR VERY SERIOUS INJURY.*



WARNING: Indicates a *potentially hazardous situation that, if not avoided, could result in DEATH OR SERIOUS INJURY.*



CAUTION: Indicates a *potentially hazardous situation that, if not avoided, may result in MINOR INJURY.*

IMPORTANT: The word IMPORTANT is used to identify special instructions or procedure which, if not strictly observed, could result in damage to, or destruction of the machine, process or its surroundings.

NOTE: The word NOTE is used to indicate points of particular interest for more efficient and convenient repair or operation.

SIGNS



WARNING: DO NOT remove or obscure Danger, Warning, Caution safety signs or Instruction signs that are not readable or are missing. Replacement signs are available from your Dealer in the event of loss or damage. The actual location of these Safety signs is illustrated on page 13.

FOLLOW A SAFETY PROGRAM

For proper operation of a Hay Pick-up Attachment, you must be a qualified and authorized operator. To be qualified, you must read and understand the written instructions supplied in this Operator's Manual, have training, and know the safety rules and regulations for the job.

Some local regulations specify that no one under the age of 16 years, for example, may operate power machinery. This includes tractors. It is your responsibility to know what these regulations are, and obey them, in the operating area or situation. These will include, but are not limited to, the following instructions for proper operation.



WARNING: *An operator should not use alcohol or drugs which can change their alertness or coordination. An operator on prescription or "over the counter" drugs needs medical advice on whether or not he or she can properly operate machines.*

A WORD TO THE OPERATOR

It is YOUR responsibility to read and understand the safety section in this manual before operating your tractor. You must follow these safety instructions that take you step by step through your working day.

In reading this section, you will note that illustrations have been used to highlight certain situations. Each illustration is numbered and the same number appears in the text in parenthesis. This number is placed at the end of the written text that refers to the illustration.

Remember that YOU are the key to safety. Good safety practices not only protect you, but also the people around you. Study the features in this manual and make them a working part of your safety program. Keep in mind that this safety section is written only for this type of machine. Practice all other usual and customary safe working precautions, and above all.

REMEMBER - SAFETY IS YOUR RESPONSIBILITY. YOU CAN PREVENT SERIOUS INJURY OR DEATH.



WARNING: *In some of the illustrations used in this Operator Instruction Book, panels or guards may have been removed for clarity. Never operate the machine without these components in position. If the removal of panels or guards is necessary to make a repair, they MUST be replaced before operation.*

SAFETY RULES

- Disengage the PTO and shut off engine before leaving the operator's seat for refueling, lubricating or adjusting the machine.
- The tractor engine ignition key must be removed each time the operator leaves the tractor.
- Wear appropriate clothing, safety boots or shoes. Do not operate the machine when visibility is bad, or during night, in poor lighting.
- When driving on a public road, or on hilly land you must remove the electrical box ignition key and put the locking pin in the stop pawl of the quick-disconnect hitch to prevent unlocking. This locking pin should also be used for the manual quick-disconnect hitch.
- Attach a safety chain of at least 20,000 lbs (9071 Kg) capacity for transportation.
- Keep children away from the machine at all times. Maximum traveling speed of a forage harvester should not exceed 20 mph (34 km/h).
- Carefully read all safety signs applied on the machine. If they are damaged, replace them immediately.
- If a feeding mechanism should become jammed, never attempt to unblock it or remove any material when the machine is in motion or the tractor engine running.
- Never feed the Hay Pick-up Attachment manually.
- Never remove guards or make adjustments while the machine or tractor engine is running.
- Never attempt to check or adjust chains while the machine is running.
- Make sure all rotating parts are stopped and the tractor engine is turned off before cleaning the machine throat.
- Before starting the tractor engine, make sure all guards, shields, and doors are in place and properly secured and check the machine thoroughly for possible loose parts or bolts and tighten them.
- Always pick-up tools after performing any adjustment.
- Never allow riders on any part of a machine.
- Block elevated components before servicing equipment.
- Never lubricate or clean any part while the machine or tractor engine is running.
- Keep hands and body out of hitch area when attaching towing vehicle.
- Securely block the wheels from moving before working on or under the machine.
- Use a lift system with a minimum capacity of 2,000 lbs (900 kg) to install the attachment on a forage harvester.
- Make sure to meet local regulations regarding wide loads on public roads.

SAFETY RULES

STOPPING PROCEDURES

No matter what type of machine is being used, it is extremely hazardous to perform any kind of maintenance work while the machine is running. Before cleaning, adjusting, or greasing, the following procedures should be followed to stop the attachment:

1. Lower the attachment to the ground.
2. Disengage the tractor power-take-off (P.T.O.).
3. Stop the tractor engine.
4. Engage the tractor parking brake.
5. Wait until all rotating parts are totally stopped.
6. Remove the P.T.O. from tractor output shaft.
7. Block all equipment wheels.



DANGER: *Rotating driveline contact may cause serious injury or death.*

GUARDS AND SHIELDS - FIGURE 1

The Hay Pick-up Attachment is equipped with guards and shields wherever an accident is likely to take place. These guards and shields do not affect the machine performance. Several safety decals are affixed on the machine to remind of potential dangers.

- A bolted guard (item 1) covers the eccentric mechanism.
- A removable guard (item 2) covers the driving mechanism.



CAUTION: *All guards and shields factory installed should be in place and maintained in good condition.*

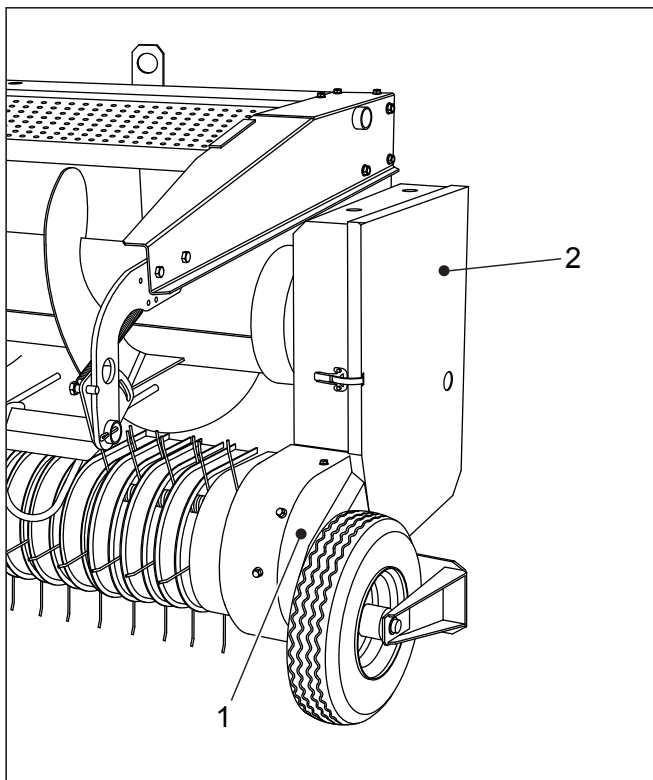


Figure 1 Guards and shields

SAFETY SIGN LOCATION

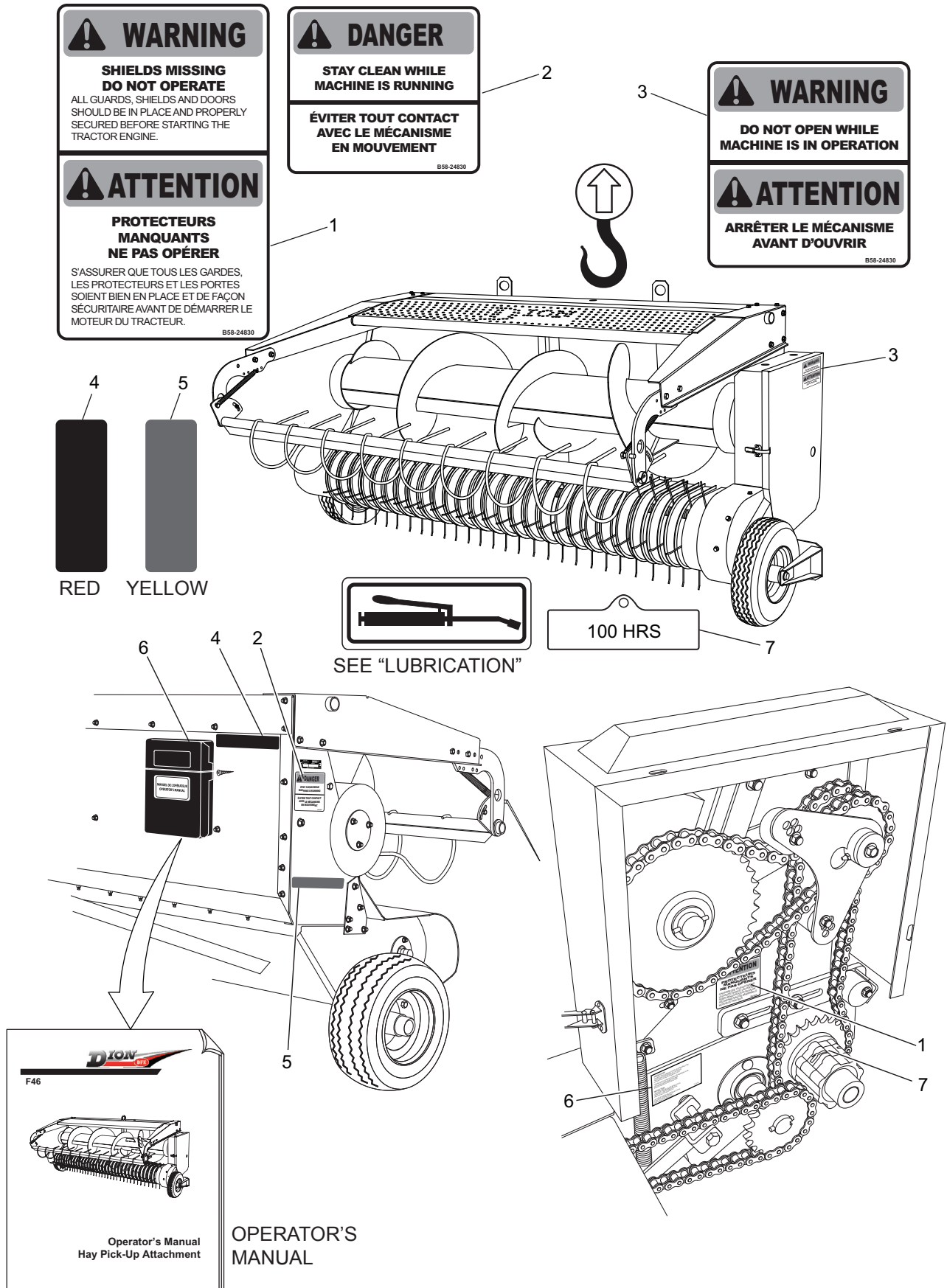


Figure 2 Safety Sign Location

ASSEMBLING

INSTALLING THE HAY SHIELD AND FRONT WINDGUARD

1. Install the L.H. windguard arm (item 1) using five $3/8"$ X $3/4"$ lg flange bolts and five $3/8"$ flange nuts. Firmly tighten.

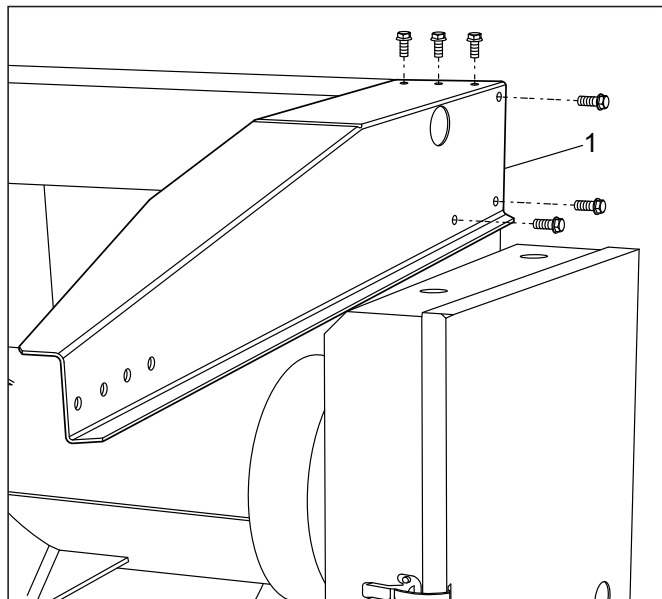


Figure 3

2. Before installing the R.H. arm (with Dion logo), insert the hay shield (item 2) in the vertical position, as shown below.

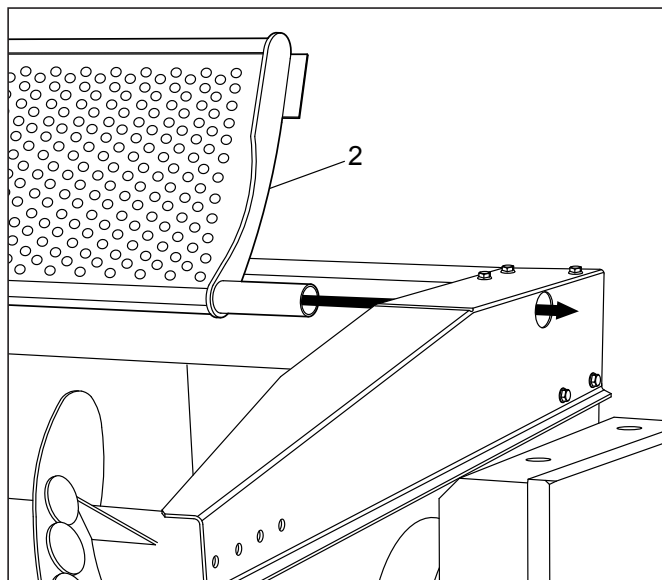


Figure 4

3. Slide the R.H. windguard arm (item 3) onto the hay shield pivot and secure it with five $3/8"$ X $3/4"$ lg flange bolts and five $3/8"$ flange nuts. Firmly tighten.

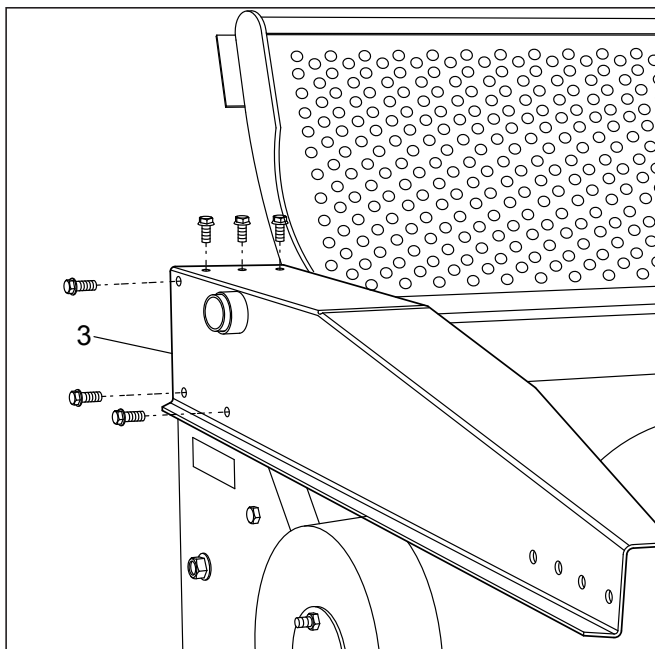


Figure 5

4. Install the «L» support brackets (item 4) to the inside of both the R.H and L.H arms with two $1/2"$ X $1 1/4"$ lg hexagonal head bolts (head on the inside) and two $1/2"$ flange nuts. Both bracket should be installed in the most forward position as shown. Firmly tighten.

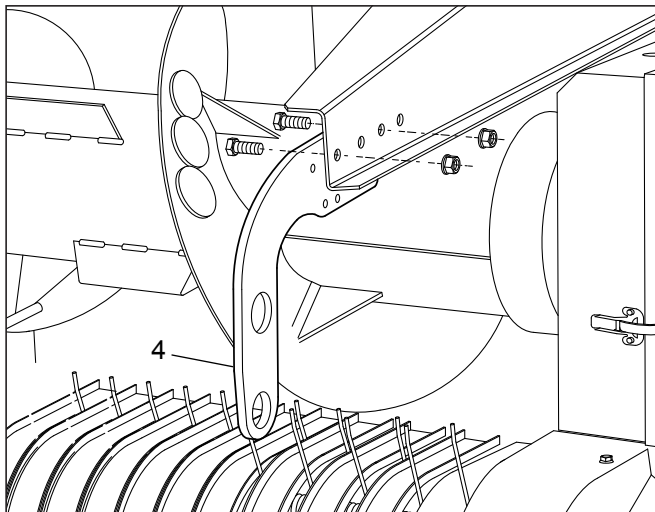


Figure 6

5. Slide the windguard (item 5) into the «L» support brackets (item 4), while placing a $1 3/4"$ dia spacer (item 6) between the brackets and the windguard.

6. Lock the windguard at each end with one or two $1 3/4"$ dia spacers (item 6) and a $1/4"$ dia X $2 1/2"$ lg cotter pin (item 7). The high and low position adjustments varies according to the operating conditions. It is suggested to use the low position first and adjust if necessary, according to the operating conditions.

ASSEMBLING

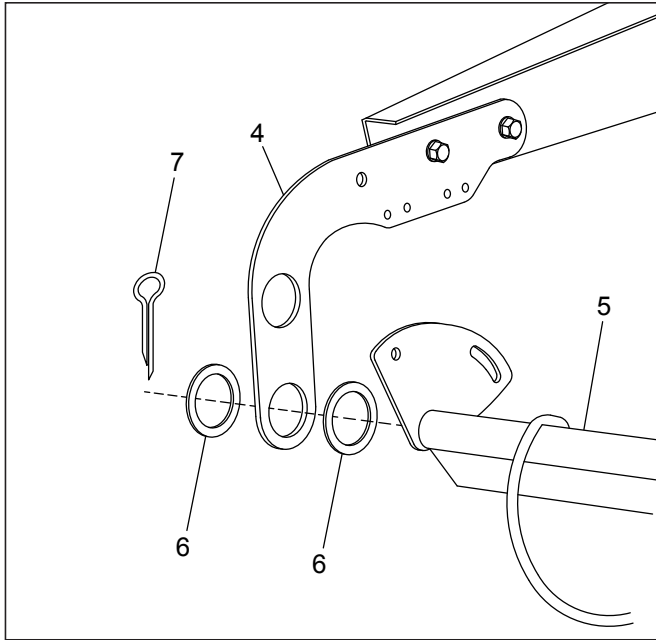


Figure 7

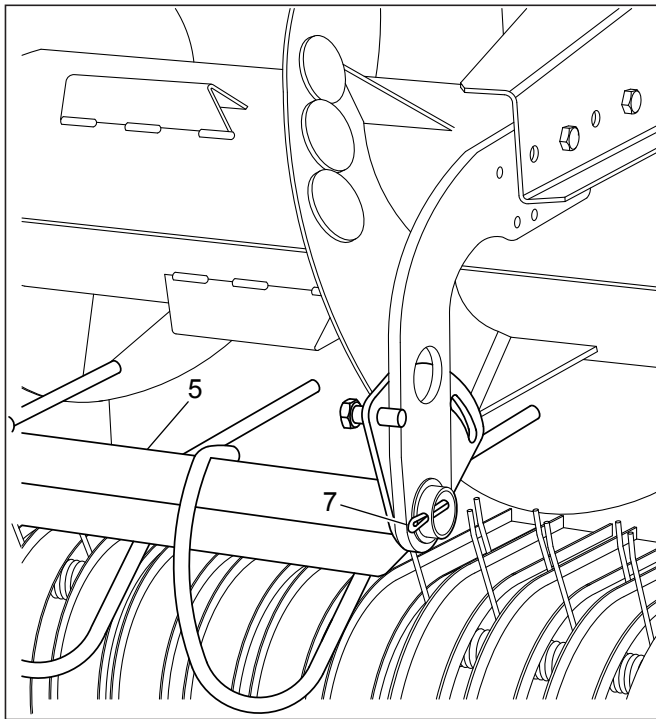


Figure 8

7. Install the two springs (item 9). Use a 3/8" X 2" lg hexagonal head bolt (item 10) and two 3/8" flange nuts (items 11). Position the bolt with its head on the inside, then secure in place with one flange nut on each side of the «L» plate (item 4). Make sure that approximately one thread is sticking out of the nut. The shoulder on each nut must face the «L» plate (item 4), as shown.

NOTE: It is suggested to use the second hole from the front. If necessary, change hole in order to modify the spring tension on the windguard, according to operating conditions.

8. Install the lock bolt (item 12). Use a 3/8" X 1" lg hexagonal head bolt. Screw a 3/8" nut (item 13) on the bolt and tighten it against the bolt head.
9. Insert this bolt-nut assembly from the outside to the inside as shown below. Lock in place with a 3/8" dia nut (item 14).
10. At one end of the windguard, position the bolt in the middle of the curved slot and firmly tighten. Then, open the windguard manually until it rests against this bolt. Finally, adjust the bolt at the other end so it also rests against the bracket. Firmly tighten.

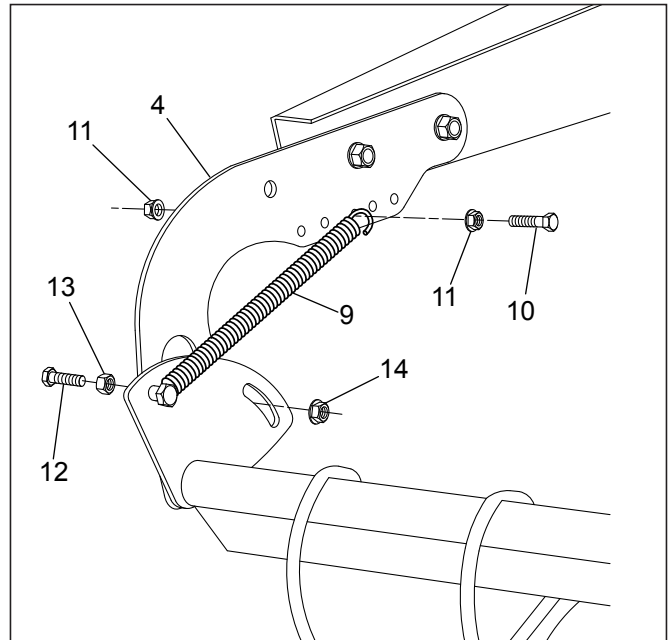


Figure 9

LUBRICATION

LUBRICATION CHART

These symbols indicate the specific points which must be lubricated, greased and verified.



WARNING: Never lubricate or clean a part when machine and/or tractor engine is running.

SYMBOL	DESCRIPTION	FREQUENCY
Black on white 	Standard grease - 9 places	Grease every 8h of operation
 SAE30 or equivalent	Roller chains	Oil every 12 hours of operation and before storage
	Star ratchet clutch Standard grease - 1 place	Grease every 100h of operation

LUBRICANT TYPE

GREASE GUN	ROLLER CHAINS
All purpose grease	Special lubricant for roller chains

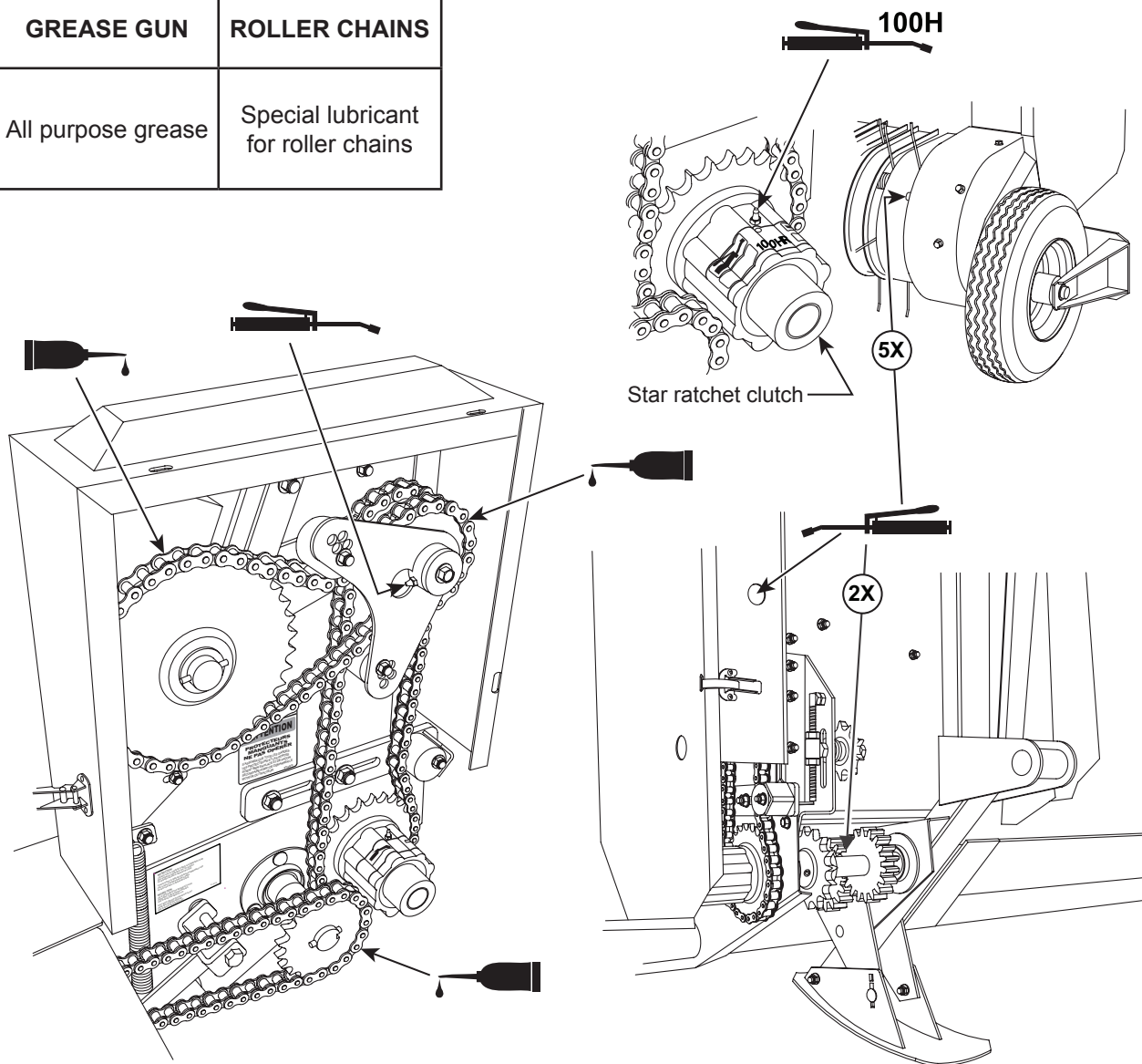


Figure 10 Lubrication (Note: Guards removed for illustration purposes only)

OPERATION

OPERATION TIPS



WARNING: Before operating the Hay Pick-up Attachment, make sure that all safety rules are observed by people working with or near this machine.



WARNING: Make sure that all guards or shields are in place and properly secured before starting the tractor engine.

Generally, it is recommended to be careful and to proceed to all necessary adjustments before operating the Hay Pick-up Attachment.

If your Forage Harvester is equipped with a Liquid Incorporation System, refer to the Harvester Operator's Manual for instructions.

Shoes (see page 17) must be adjusted according to the height of your Forage Harvester.

Your Hay Pick Up Attachment is equipped with lift eyelet (see page 17) for transport and to assist in a safe maintenance.

INSTALLING THE HAY PICK-UP ON THE FORAGE HARVESTER

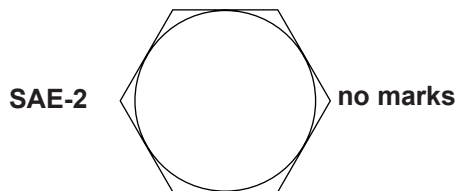
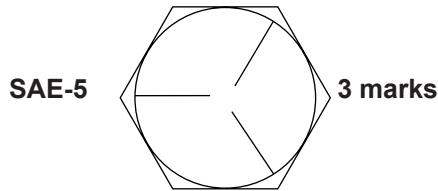
Refer to the Forage Harvester's operator manual.

NOTE: The front part of the grain bottom plate needs to be removed before harvesting hay.

BOLT TORQUE SPECIFICATIONS

The table below gives correct torque values for bolts used on the machine. Check tightness of bolts periodically. Replace hardware with the same grade bolt.

BOLT DIA,	SAE-2		SAE-5	
	Lbs/ft	N.m	Lbs/ft	N.m
1/4"	6	8	9	12
5/16"	10	13	19	25
3/8"	20	27	33	45
1/2"	45	61	80	110
5/8"	95	128	160	215
3/4"	170	230	280	380



1000 -1000 AND 1000 - 800 R.P.M. TRANSMISSIONS

If your Forage Harvester is equipped with a 1000-1000 R.P.M. transmission, use the 19-tooth sprocket wheel (item 1). For a 1000 - 800 RPM. transmission, use the 21-tooth sprocket wheel (item 2). Properly align roller chain (item 3).

NOTE: Failure to respect this rule could lead to mechanism break down!

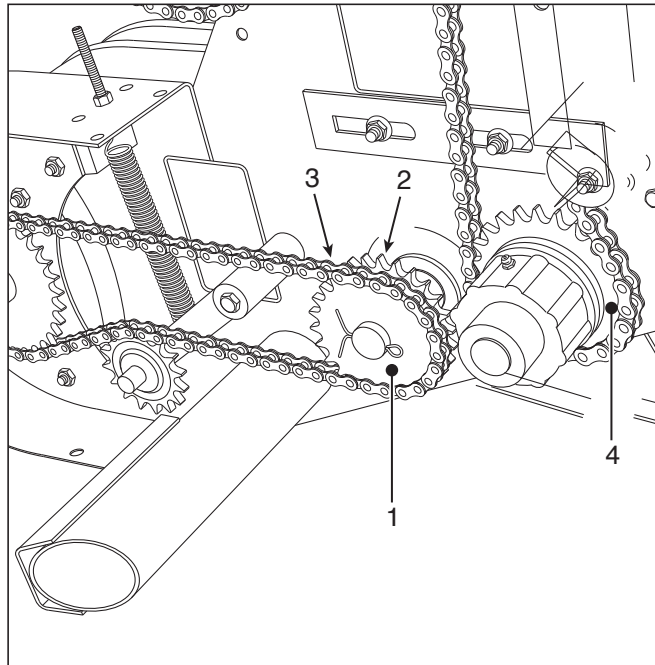


Figure 11 1000 - 1000 RPM Transmission

ADJUSTMENTS - MAINTENANCE

NOTE: Keep in mind that any maintenance or adjustment described in this manual is the owner's sole responsibility.



WARNING: Never remove guards or make adjustments while machine and/or tractor engine is running.



WARNING: After making adjustments, check the machine very carefully for possible loose parts or bolts. Make sure that all guards and shields are in place and properly secured before starting the tractor engine.



WARNING: Never work on the Hay Pick Up Attachment without first lowering it to the ground, turning off the tractor engine and applying parking brake.

AUGER SCREW DRIVING CHAIN TENSION ADJUSTMENT - FIGURE 12 AND FIGURE 13

To tighten the auger screw driving chain (item 1), the tightener should be adjusted so that the chain is straight on top while following the polyethylene tightener (item 2) at the bottom. Use the bolts (item 3 and the holes (item 4) provided for this adjustment.

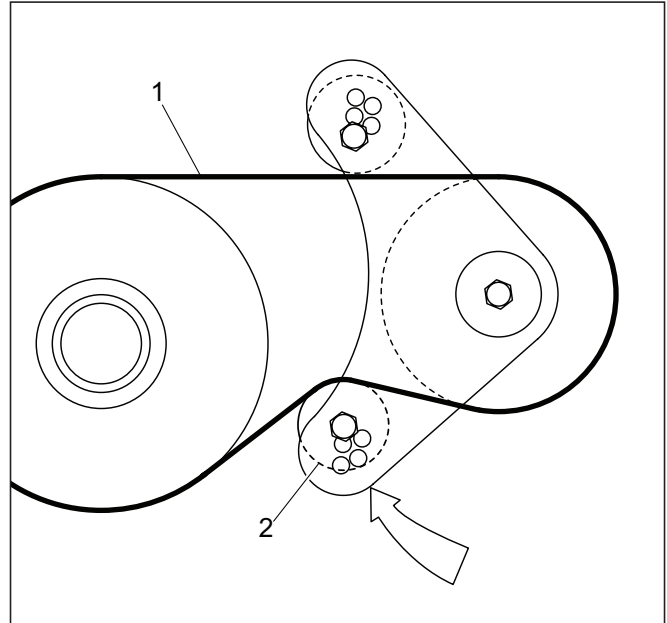


Figure 12 Auger screw driving chain adjustment diagram

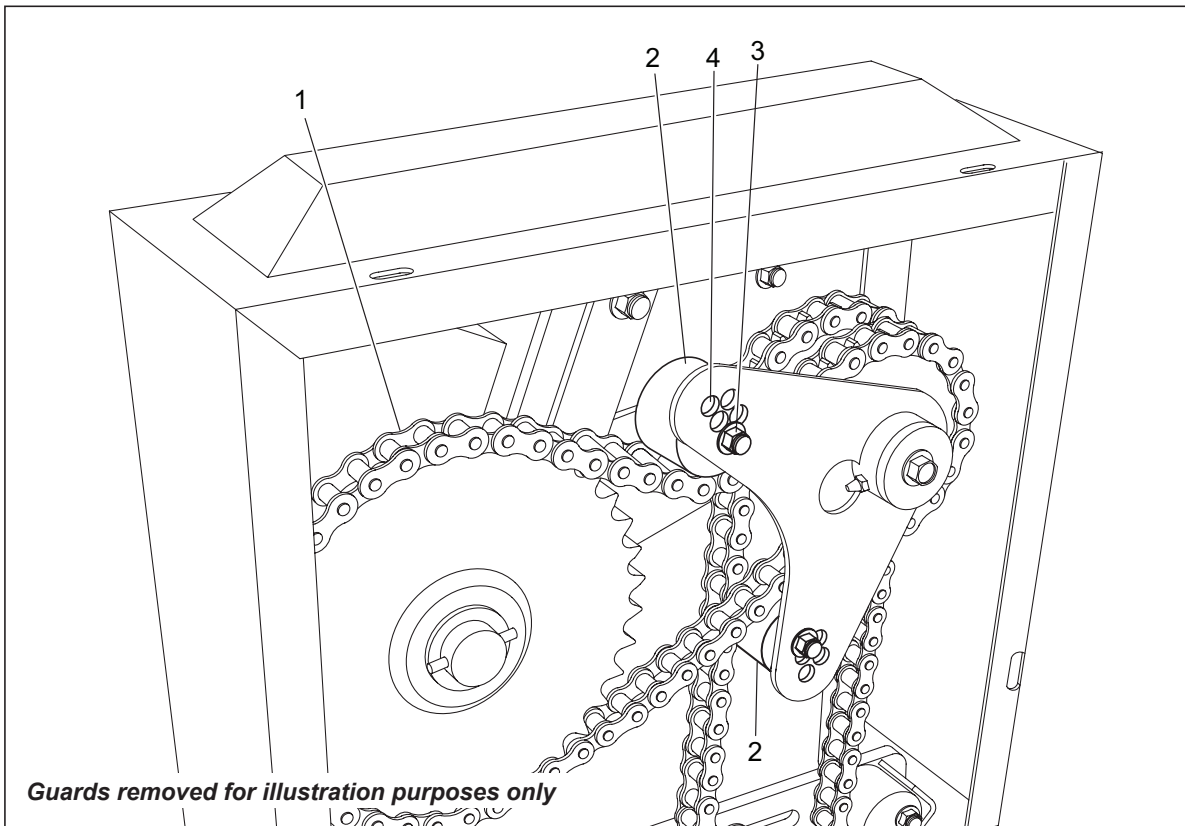


Figure 13 Auger screw driving chain

ADJUSTMENTS - MAINTENANCE

PICK-UP REEL DRIVING CHAIN - FIGURE 14

Hook up the spring (item 1) to the hole of the attachment support (item 2).

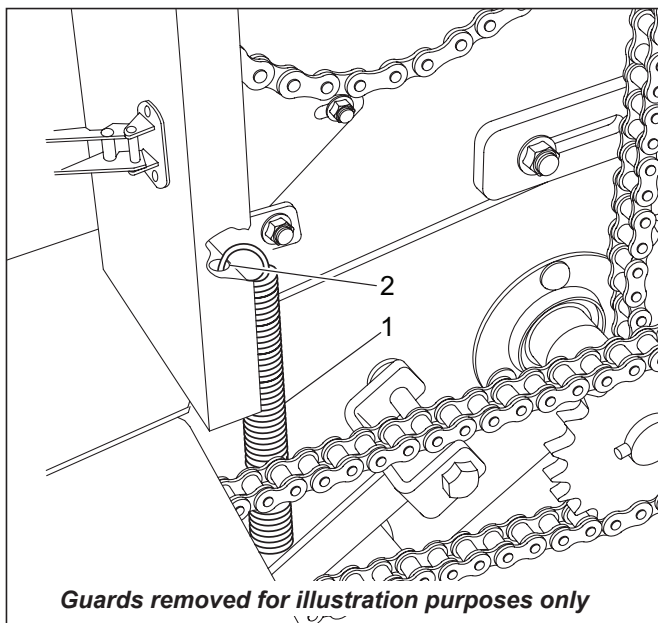


Figure 14 Pick-up reel driving chain

ATTACHMENT DRIVING CHAIN - FIGURE 16

This chain (item 1) is coupled to the Forage Harvester. The adjustment must be done with the Attachment at operating height. To obtain a normal tension, loosen the nut (item 2) then adjust with the nuts (item 3). Retighten the nut (item 2) of the tightening wheel.

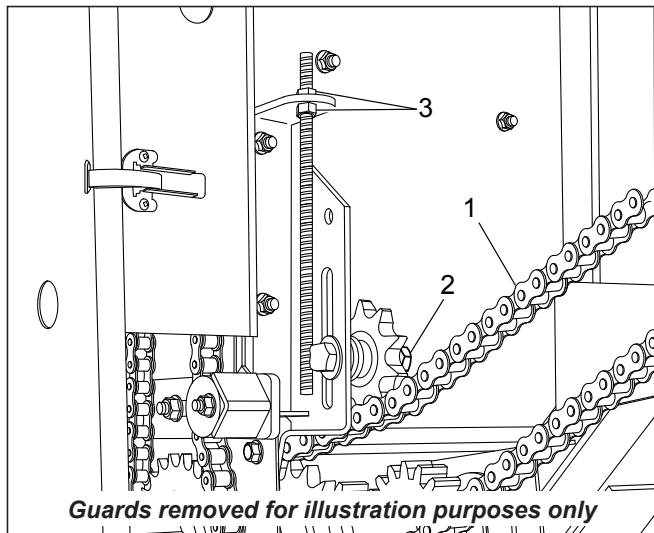


Figure 16 Attachment driving chain

INTERMEDIATE DRIVING CHAIN TENSION ADJUSTMENT - FIGURE 15

To tighten this chain (item 1) loosen the nuts (item 2) of the tightener (item 3) then make adjustments to obtain a tension equal to a deflection of 1/4" (6 mm). Firmly retighten nuts (item 2).

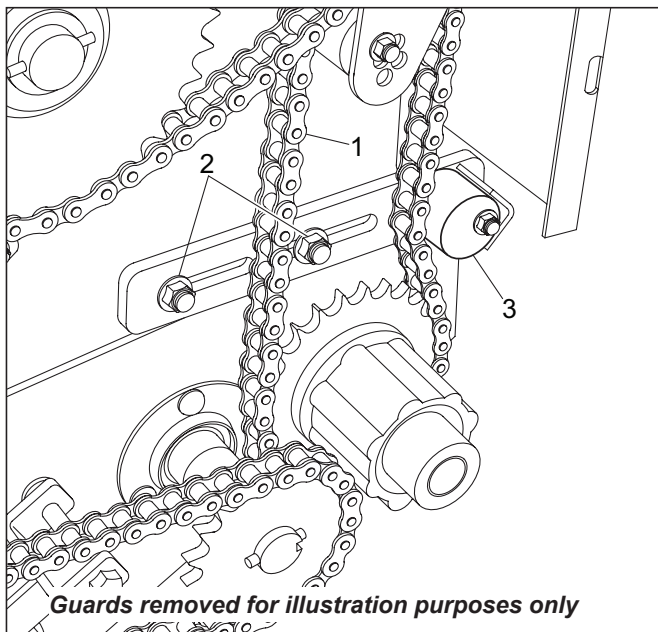


Figure 15 Intermediate chain

TIRE WHEELS - FIGURE 17

Adjust the wheel height according to the terrain condition. Holed supports (item 1) are provided to this effect. Retighten all nuts once this adjustment is completed. It is recommended to adjust the spring teeth (item 2) at 2 to 4" (5 to 10 cm), according to operating conditions.

NOTE: The closer the spring teeth are from the ground, the more risks there are to pick up debris (metal pieces and rocks).

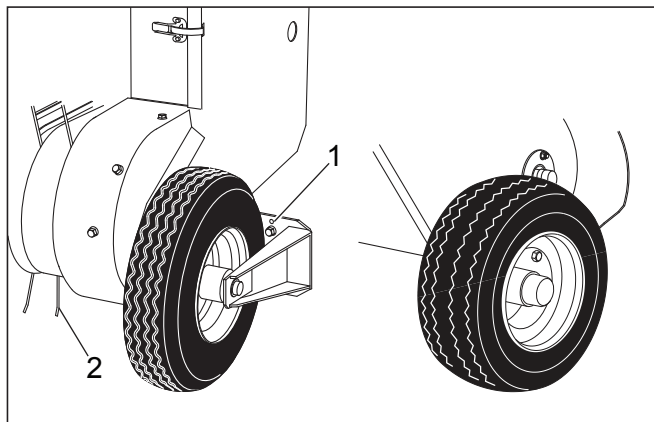


Figure 17 Tire wheels

ADJUSTMENTS - MAINTENANCE

SHOES - FIGURE 18

Adjust both shoes (Item 1) according to the Forage Harvester height by using the bolts (item 2) and the adjustment holes (item 3). Firmly retighten all bolts.

NOTE: Shoes should be adjusted 1 to 2" higher the wheels.

The shoes protect the Hay Pick-up against the differences in level of the terrain. Wheels are used for adjusting the height of the Attachment.

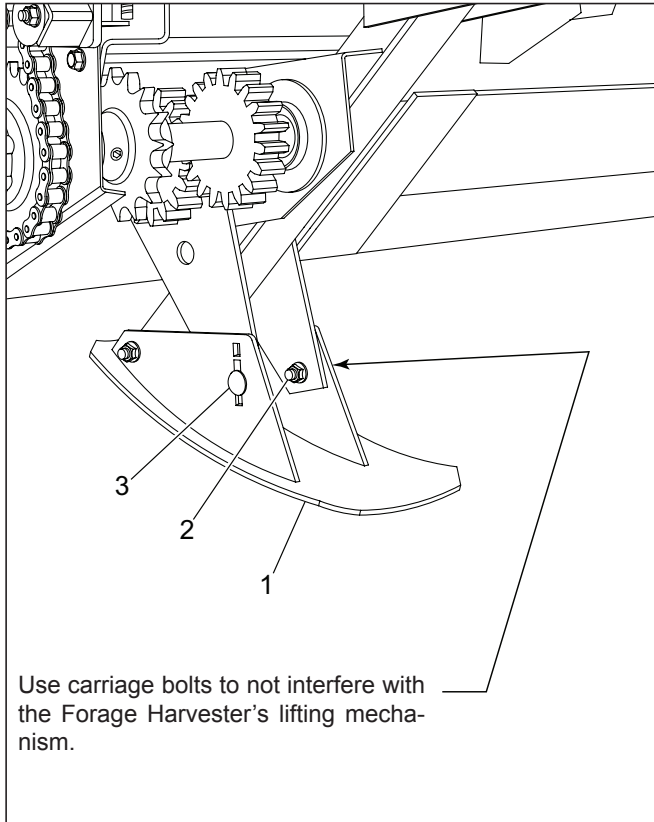


Figure 18 Shoes

WINDGUARD - FIGURE 19

The windguard (item 1) adjustment is done according to the volume and size of the hay. The windguard is initially adjusted for the average hay. It is possible to modify the position of the windguard so it adapts to the hay volume and size. For vertical adjustments, remove the pin (item 2) and insert the windguard assembly into the 2nd hole provided for this purpose.

It is also possible to change the travelling of the windguard by loosening the nut (item 3). Adjust to the desired position then tighten back the nut (item 3).

Finally, to change the forward/backward position, loosen the nuts (item 4). Next, adjust to the desired position of the windguard then tighten back the nuts (item 4).

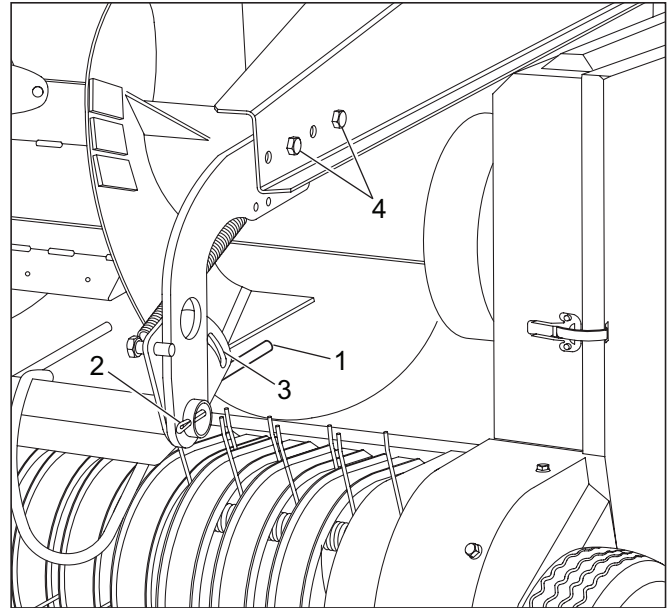


Figure 19 The windguard

LIFT EYELETES - FIGURE 20

The Hay Pick-up Attachment is equipped with two eyelets (figure 12) to lift attachment up for proper transportation and maintenance. The minimum lifting load must be 2000 lbs (900 Kg).

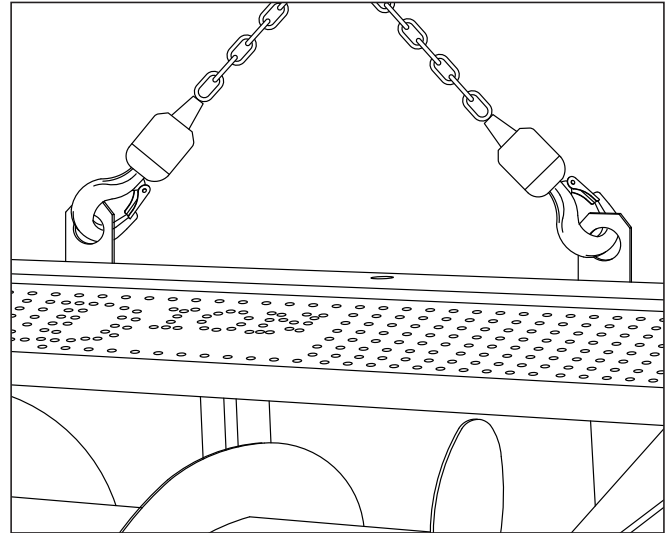


Figure 20 Lift eyelets

ADJUSTMENTS - MAINTENANCE

STAR RATCHET CLUTCH - FIGURE 21

This clutch (item 1) protects the auger drive mechanism in case of overload, clogging, or break. Lubricate once every 100 hours of operation. **Do not over grease.**

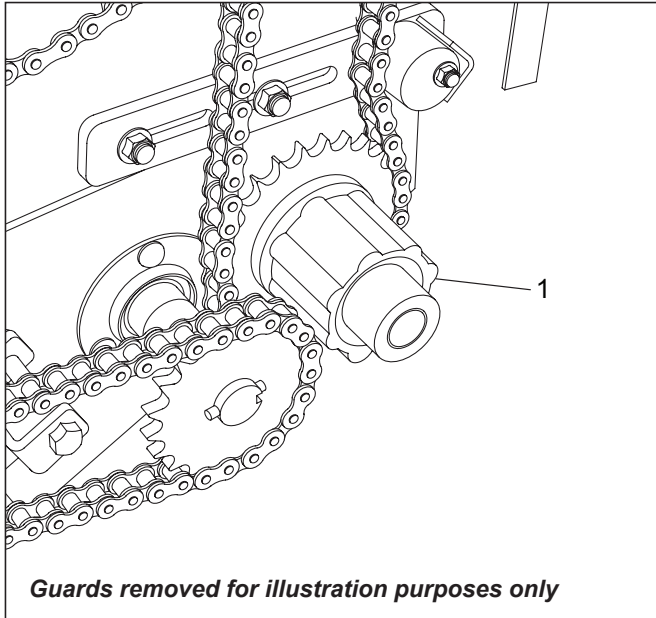


Figure 21 Star ratchet clutch

WEAR PLATES - FIGURE 22

Check wear plate (item 1), on both sides of the feeding throat, once a year or after every 100 hours of operation. Check for excessive wear. Replace if necessary.

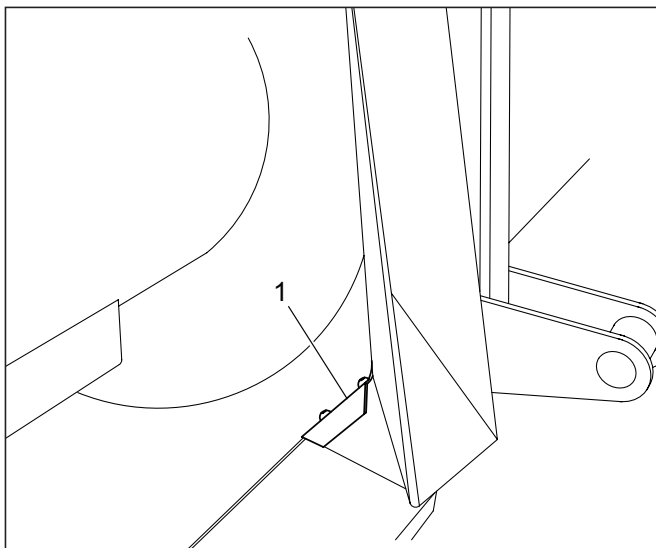


Figure 22 Wear plate

FEED AUGER ROTATION SPEED ADJUSTMENT- FIGURE 23

By replacing the 22-teeth standard sprocket (item 3) with a 25-teeth sprocket (item 1), the auger rotation speed is increased by 12%. According to the operation conditions, increasing the speed can help regulate the flow of material to the forage harvester.

The 25-teeth sprocket as well as the #60 half-link (item 2) are supplied as standard equipment on the hay pick-up and they are located under the guard.

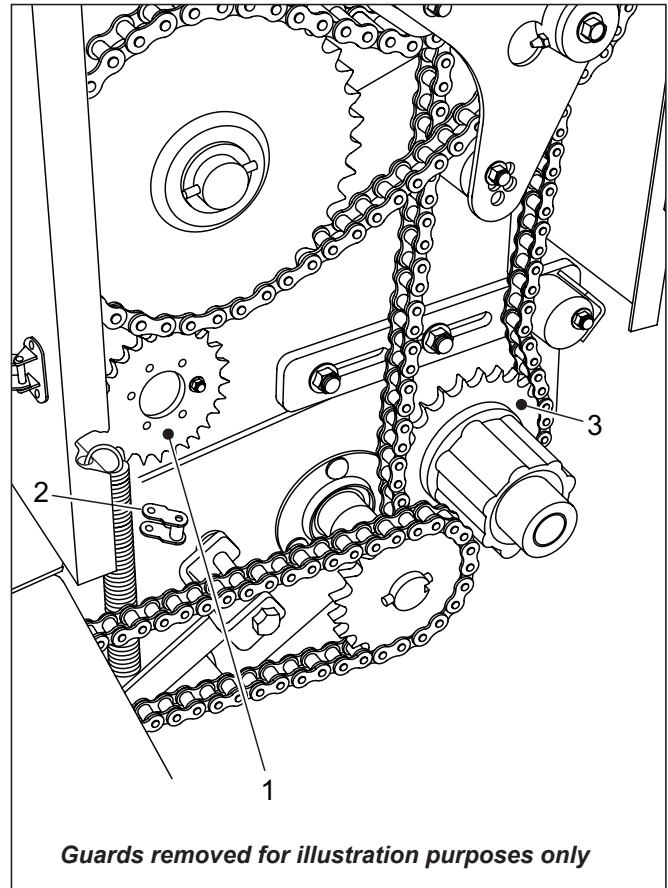


Figure 23 Feed auger

NOTE: When using the 34-teeth double sprocket on the transmission of the Forage Harvester, it is recommended to install the 25-teeth sprocket (item 1) to increase the rotational speed of the feed auger.

ADJUSTMENTS - MAINTENANCE

JAW-SPUR CLUTCH SYSTEM - FIGURE 23

The jaw-spur clutch system (item 1) prevents the spring-teeth Pick-up from going backwards when the auger is put in reverse to free the machine when jammed.

This clutch must be free of debris at all times and well greased.

To verify its proper functioning manually, have the spring-teeth Pick-up rotate in its normal operating direction.

The jaw spur should move freely on the shaft, while compressing the spring (item 2). The rest of the machine should not be driven. Otherwise, clean and lubricate the clutch properly.

Poor functioning of this clutch could lead to major damage to the Hay Pick-up.

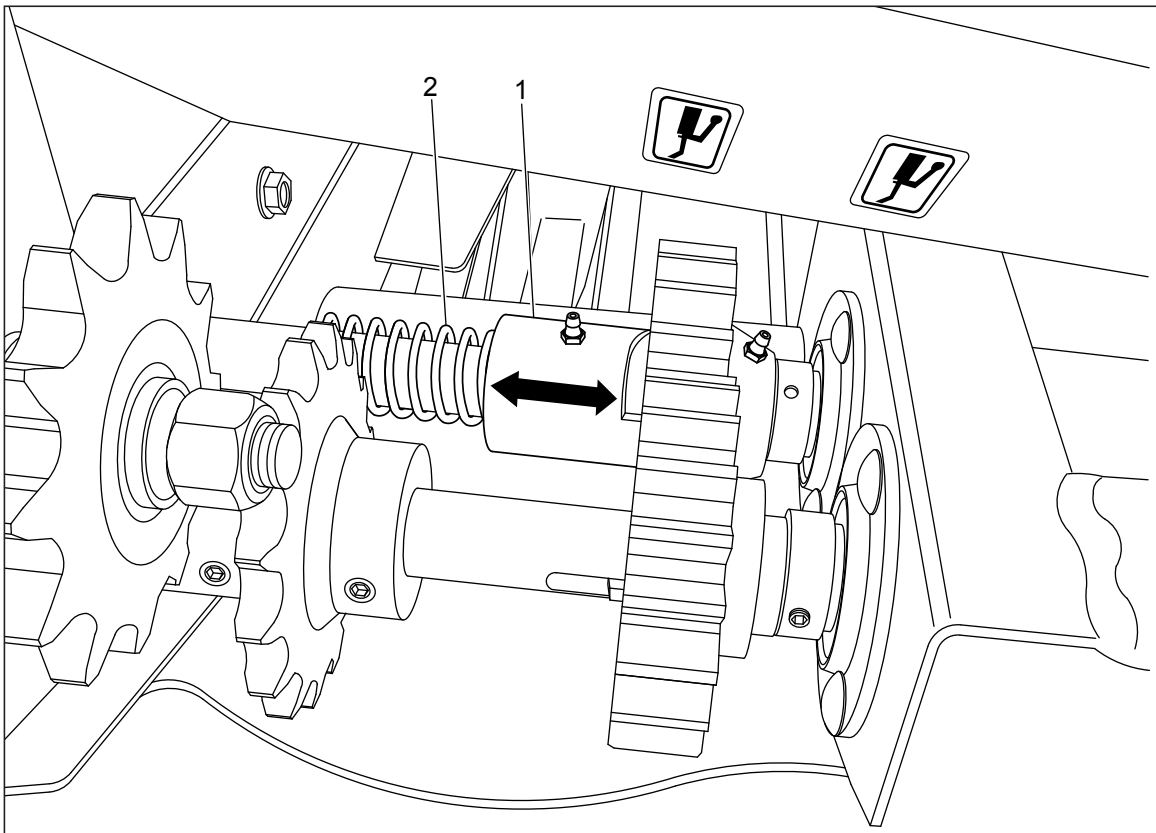


Figure 24 Jaw-spur clutch

ADJUSTMENTS - MAINTENANCE

DISASSEMBLING / ASSEMBLING THE RADIAL PIN CLUTCH



DANGER: Always wear safety glasses.

NOTE: In order to ensure proper cleaning of the device, remove excess grease and check condition of all internal components.

NOTE: Do not unbolt the sprocket to assemble the cam limiter. Leave the sprocket in place.

1. Remove the retaining ring (item 7), the shoulder ring (item 8) and the sealing ring (item 2).

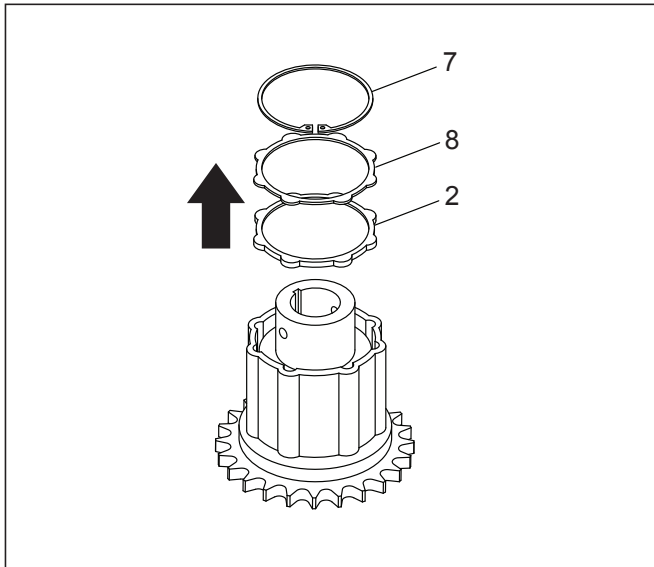


Figure 25

2. Use an 8" (13 cm) diameter, 8" (20 cm) long metal tube secured to a metal plate to ensure a stable assembling.

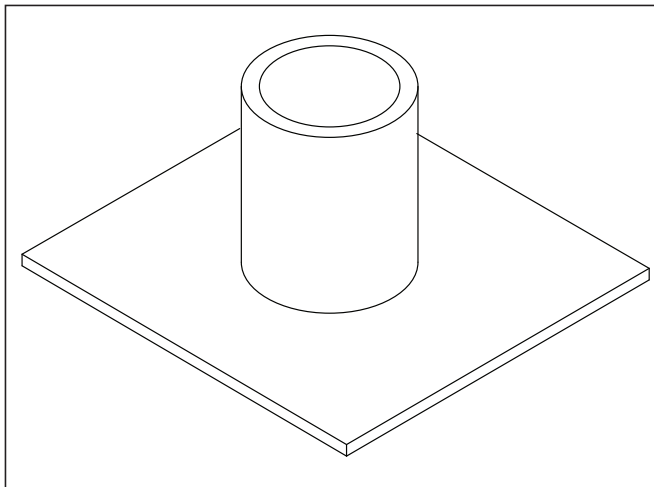


Figure 26

3. Insert a 5/16" hexagonal head bolt (3" long) in the hub hole and lock in place with a nut.

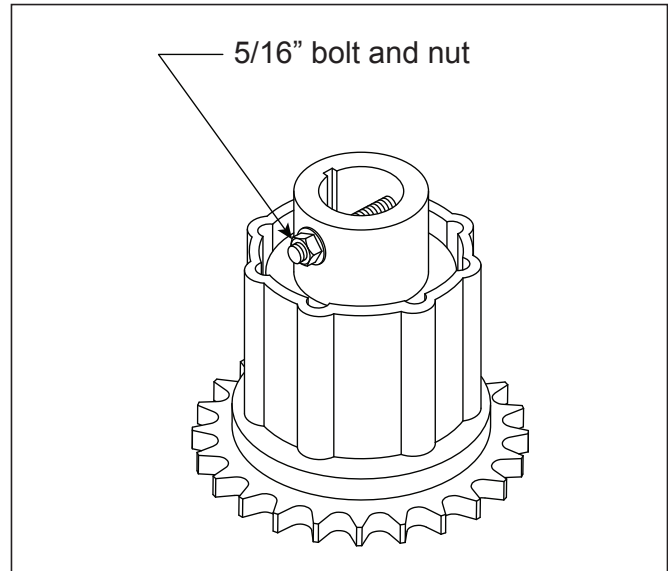


Figure 27

4. Position the assembly on top of the tube and, using a 1" dia (2.5 cm) shaft, push the hub out of the clutch housing.

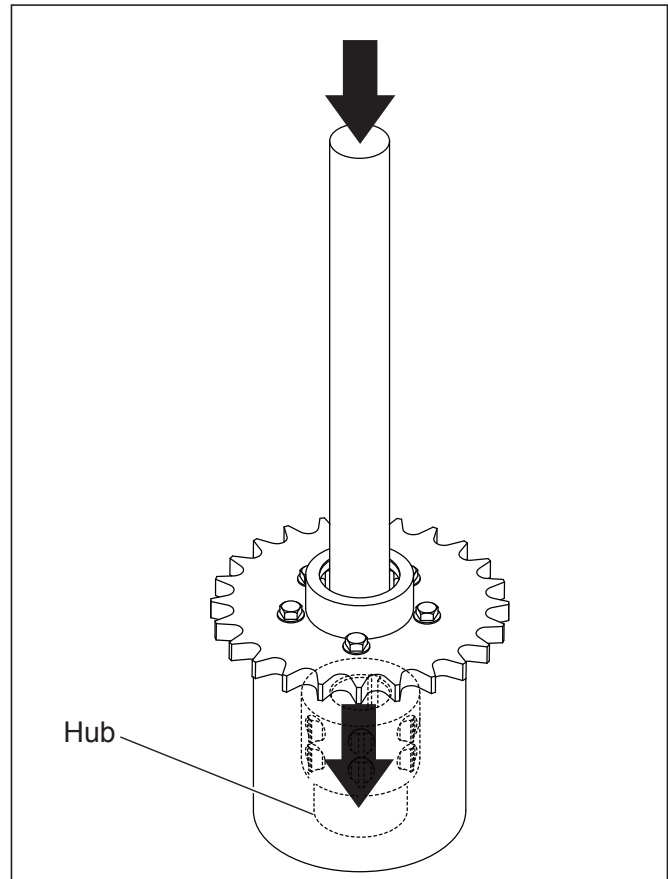


Figure 28

ADJUSTMENTS - MAINTENANCE

5. Properly clean all components and inspect springs and cams as well as inside of clutch housing.

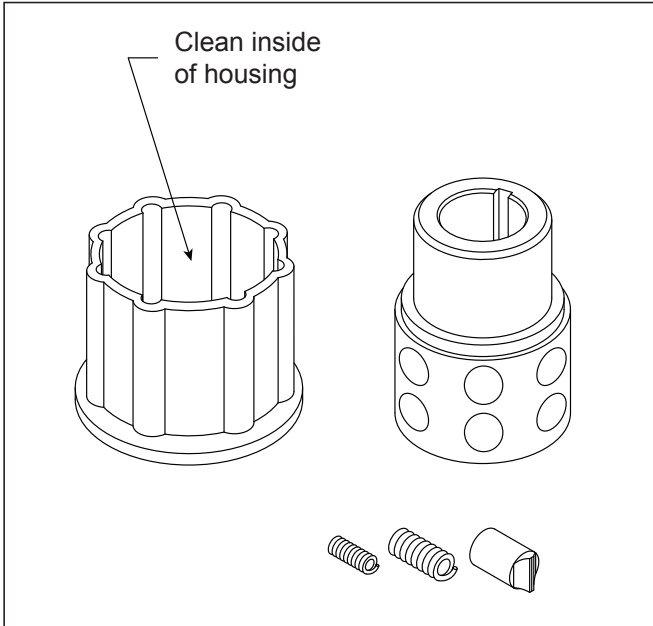


Figure 29

6. Remove the 5/16" bolt and nut.
7. Insert cams (item 11) as shown below, one row at a time. Make sure to first insert the two springs (items 9 and 10) in each cam.

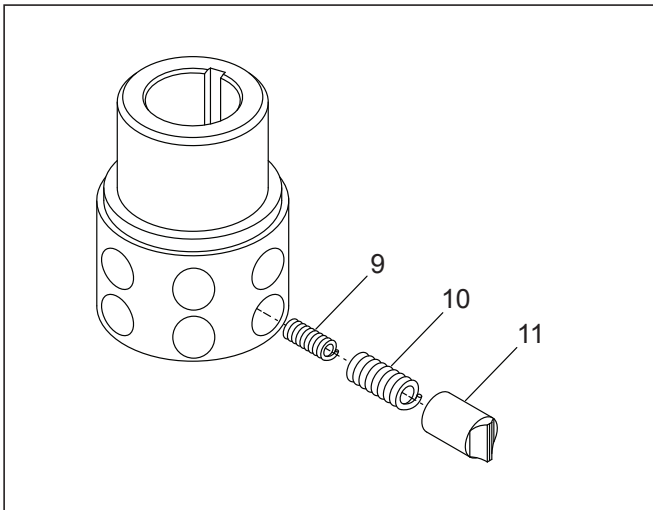


Figure 30

8. Tighten cams in place with a hose clamp. The clamp should cover only 2/3 of the cams, as shown. The cam tips should be positioned vertically, as shown. Tighten until the cams are pressed against the back of the cavities.

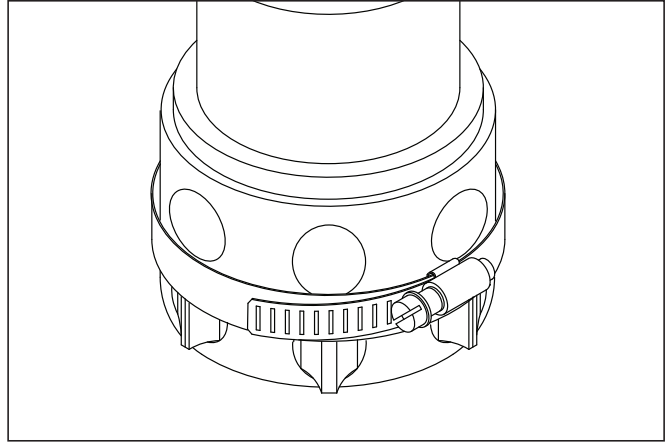


Figure 31

9. Place the housing (with sprocket) on a table and insert the hub assembled with cams.
10. Using a plastic hammer, force the hub inside the housing. The hose clamp will hold the cams in place while they are pushed in their proper position inside the hub.

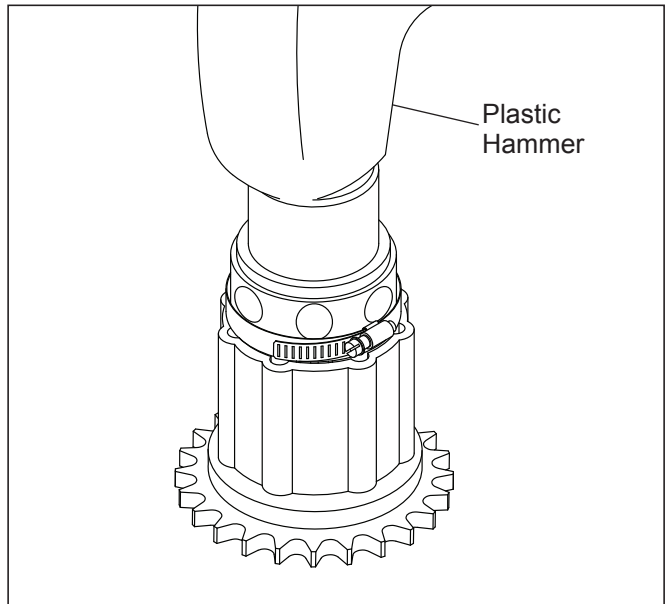


Figure 32

11. Repeat these steps for the remaining two rows.
- NOTE:** The last row will only have seven cams and springs.
12. Make sure there are always two springs in each cam.
13. Put the sealing ring (item 2), the shoulder ring (item 8) and the retaining ring (item 7) back in place.
14. Once the assembling is over, apply grease (a single pump stroke) to the assembly. Apply grease every 100 hours of operation thereafter.

STORAGE

IMPORTANT: An adequate maintenance and storage is essential to ensure the machine durability. They should never be neglected.

At the end of the season, we would suggest the following procedures:

1. Clean out the Hay Pick-up Attachment of all dirt, earth, material, excess of grease, or any other foreign substance which may absorb water thus causing rust.

NOTE: Never use a power washer to clean conveyor chains, bearings and gears.

2. Completely lubricate the attachment.
3. Run the machine a few minutes then check components. Make sure no bolts are loose or missing, particularly under the disks.
4. Clean and oil all components which have been exposed to wear.
5. Paint damaged parts.
6. Order parts that need to be replaced, and repair your attachment before starting a new season.
7. For your own safety, replace all damaged guards and not easily readable decals.
8. Store the attachment in a clean and dry location.